

# Serie F.700

## STAINLESS STEEL BALL VALVE THREADED

F.740



The valve model F.740 is threaded ball valve, made of stainless steel, manufactured in accordance with the most severe product standards.

Suitable for chemical and industrial plants, for heating and conditioning (HVAC), district heating, agricultural applications, oils and hydrocarbons

**YES:** for services with frequent actuation; suitable for installing of manual, electric and pneumatic servo commands

**NO:** for steam, for choking and regulation of the flow

### Application fields



WATER



CONDITIONING



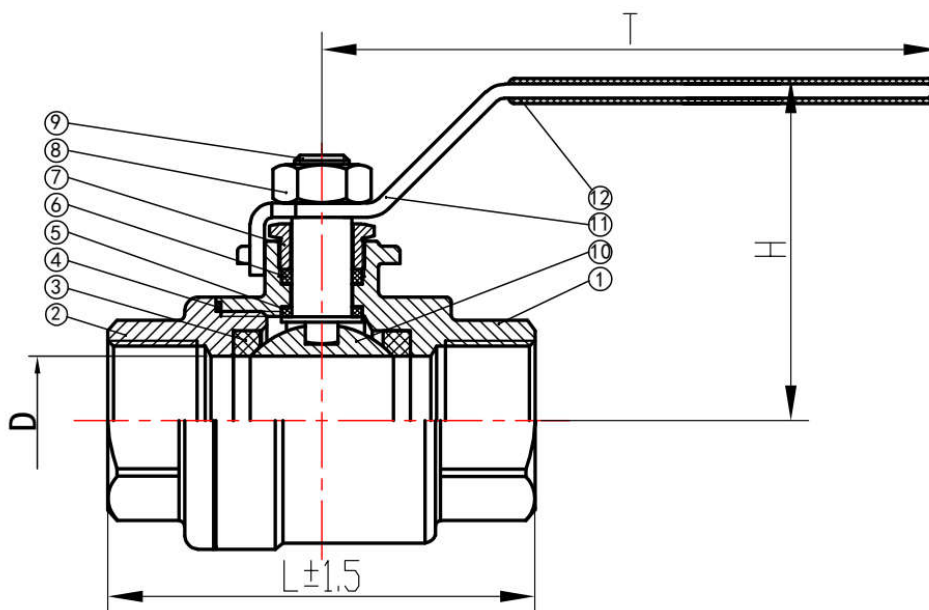
INDUSTRY



HEATING



[www.flowsureglobal.com.tr](http://www.flowsureglobal.com.tr)



## Materials

	Component	Material
1	Body	CF8 – Stainless Steel
2	Bonnet	CF8 – Stainless Steel
3	Seat	PTFE
4	Gasket	PTFE
5	Thrust Washer	PTFE
6	Packing	PTFE
7	Gland	SS201 – Stainless Steel
8	Nut	SS201 – Stainless Steel
9	Stem	SS304 – Stainless Steel
10	Ball	SS304 – Stainless Steel
11	Handle	SS201 – Stainless Steel
12	Handle Cover	PVC

\*Option for Stainless steel materials: SS316

## Dimensions (mm)

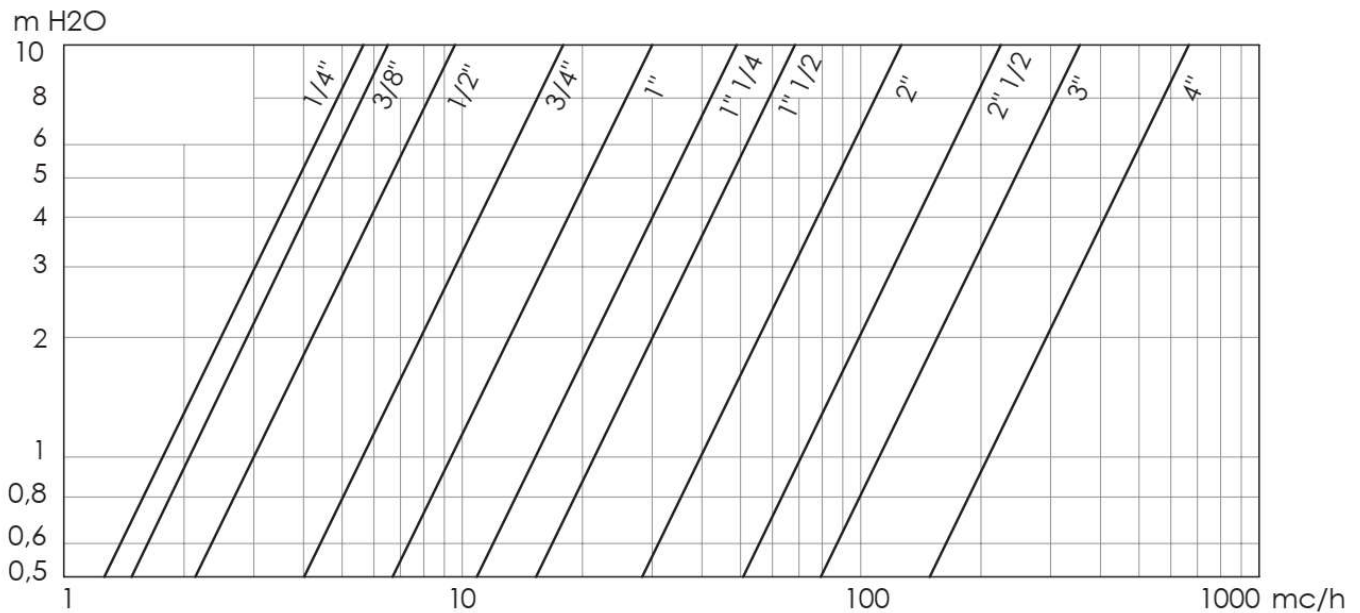
DN	8	10	15	20	25	32	40	50	65	80	100
D	9	11	15	20	25	32	40	50	65	80	100
L	52	52	56	62	71	81	92	109	145	168	203
H	52	52	52	62	67	72	84	90	128	137	160
T	89	89	104	111	128	143	156	166	207	220	318

### Certificates



### Standards

Design : TS 3148, EN ISO 17292  
 Thread Standard : EN ISO 228-1, BS (BSP)  
 Tests : TS EN 12266-1  
 Nominal Pressure: PN16  
 Temperature: -20 ~ 180°C

**Head loss Fluid: water** (1m H<sub>2</sub>O = 0.098bar)**Instruction and Recommendations****STORING**

Keep in dry and closed place.

**RECOMMENDATIONS**

Before carrying out maintenance or dismantling the valve:

Ensure that the pipes, valves and fluids have cooled down, that the pressure has decreased, and that the lines and pipes have been drained in case of toxic, corrosive, inflammable or caustic liquids.

Temperatures above 50°C and below 0°C might cause damage to people.

**INSTALLATION**

- Handle with care
- The valve must be installed in either the open or closed position.
- Water hammers might cause damage and ruptures. Inclination, torsions and misalignments of the piping may subject the installed valve to excessive stress. It is recommended that elastic joints be used, in order to reduce these effects as much as possible.
- At sub-zero temperatures, the liquid between the body and ball may freeze, causing irreparable damage. If the valve is exposed to such conditions, insulation of the valve is recommended.
- It is recommended that the valve be operated periodically, to prevent the build-up of materials on the ball and the seats.

**DISPOSAL**

For valve operating with hazardous media (toxic, corrosive...) , if there is a possibility of residue remaining in the valve, take due safety precaution and carry out required cleaning operation. Personnel in charge must be trained and equipped with appropriate protection devices. Prior to disposal, disassemble the valve and separate the component according to various materials. Please refer to product literature for more information. Forward sorted material to recycling (e.g. metallic materials) or disposal, according to local and currently valid legislation and under consideration of the environment.